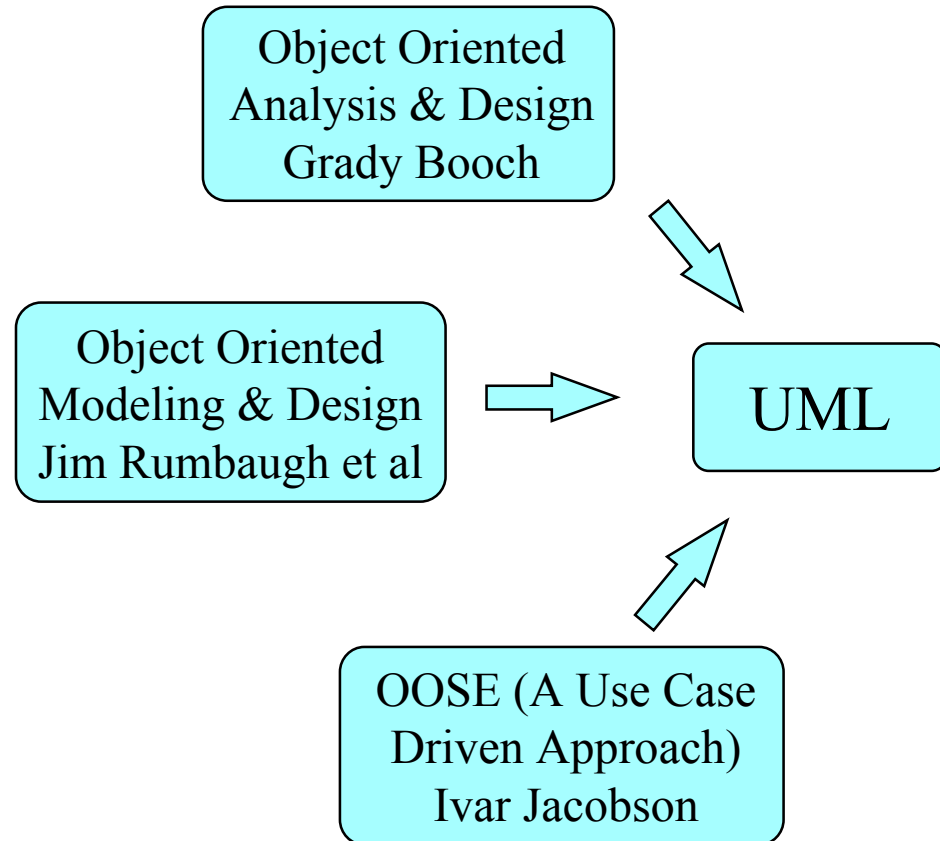


Unified Modelling Language

- ◆ **Syntax only**
- ◆ **Comprehensive**
- ◆ **Language Independent**
- ◆ **Process Independent**
- ◆ **Tool Independent**
- ◆ **Application not well understood**

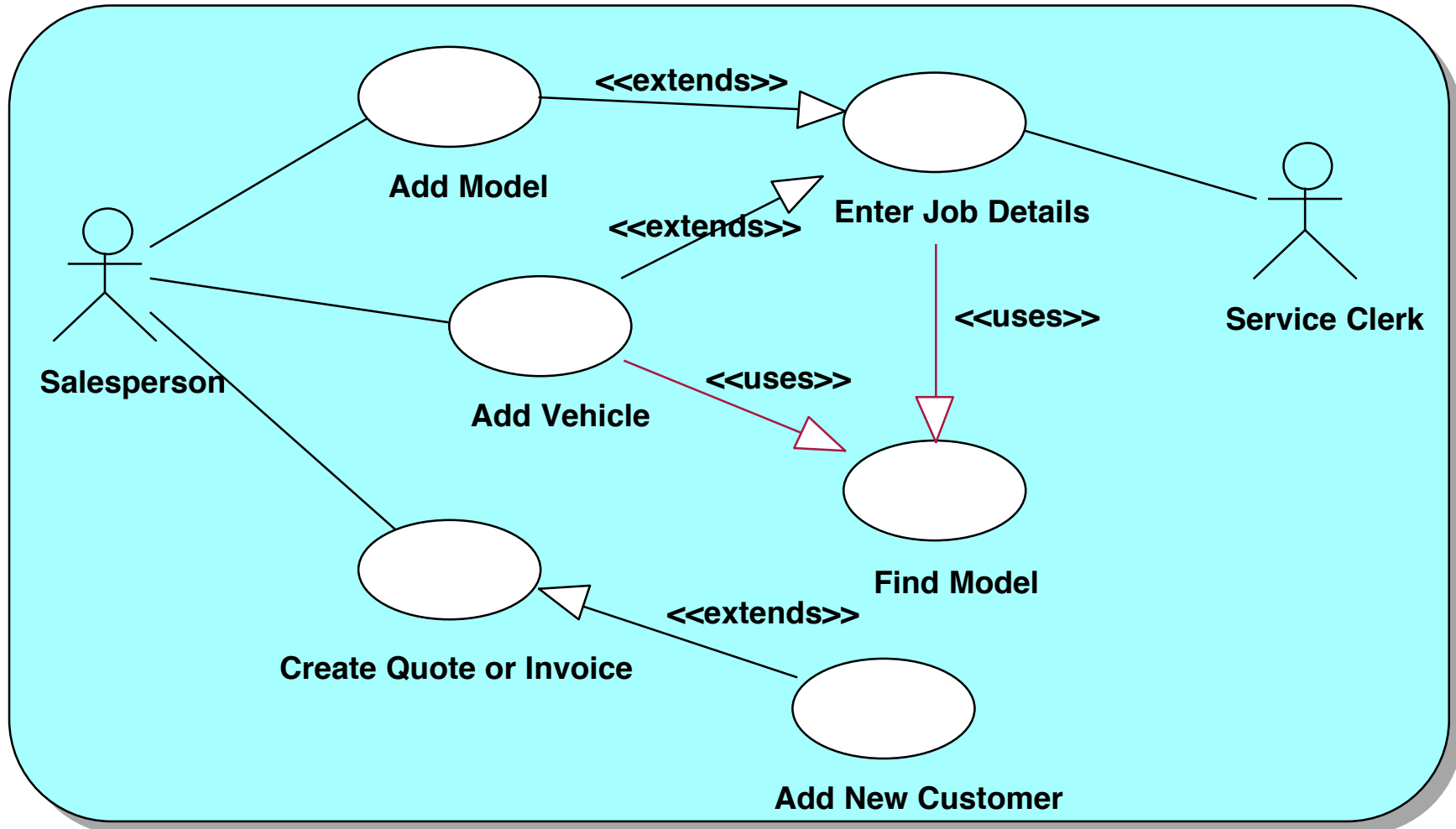


An Introduction to the Unified Modelling Language UML

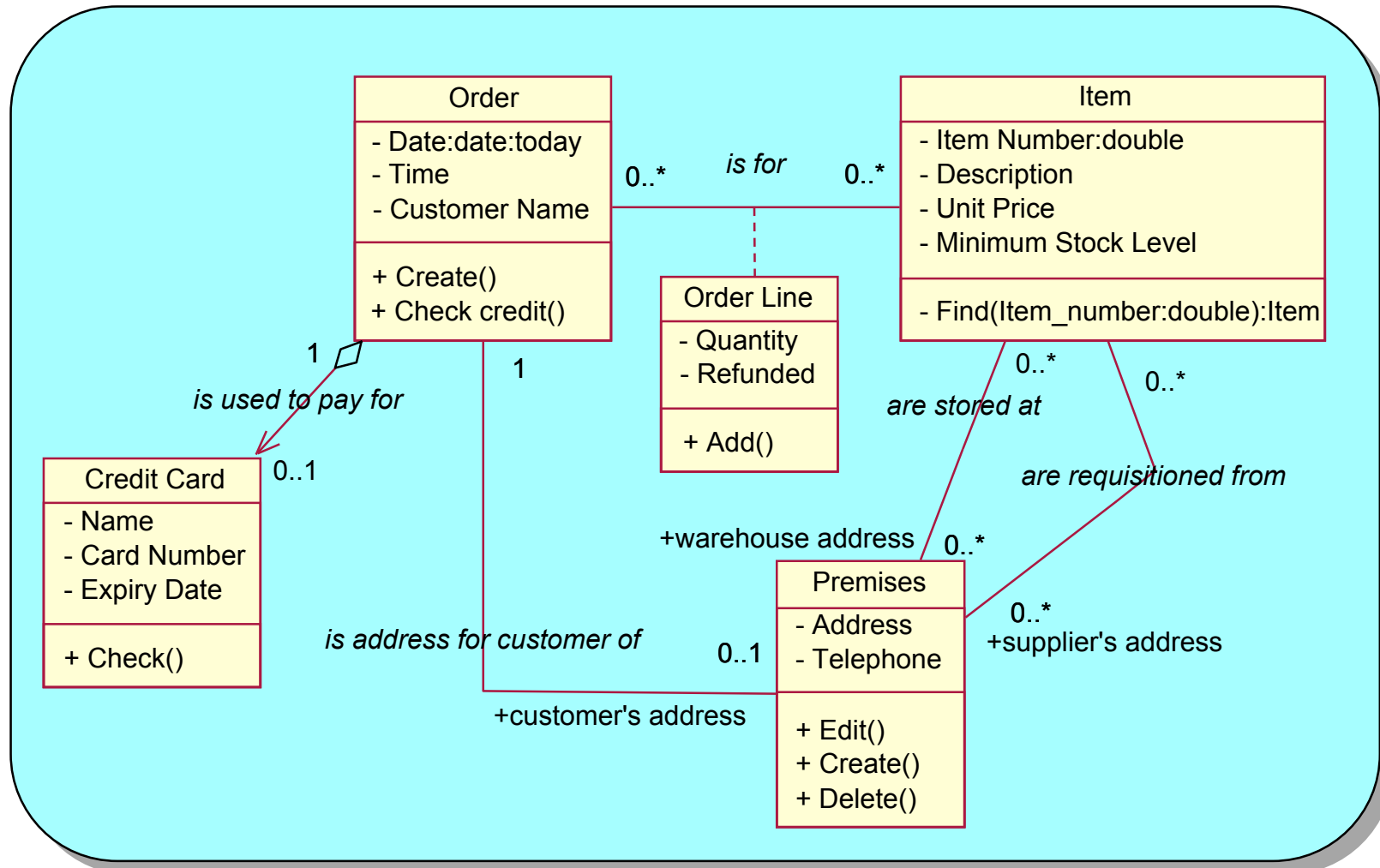
UML Diagram Types

- ◆ **Use Case Diagrams**
- ◆ **Static Structure Diagrams**
 - **Object Diagrams**
 - **Class Diagrams**
- ◆ **Interaction Diagrams**
 - **Sequence Diagrams**
 - **Collaboration Diagrams**
- ◆ **Statechart Diagrams**
- ◆ **Activity Diagrams**
- ◆ **Implementation Diagrams**
 - **Component Diagrams**
 - **Deployment Diagrams**

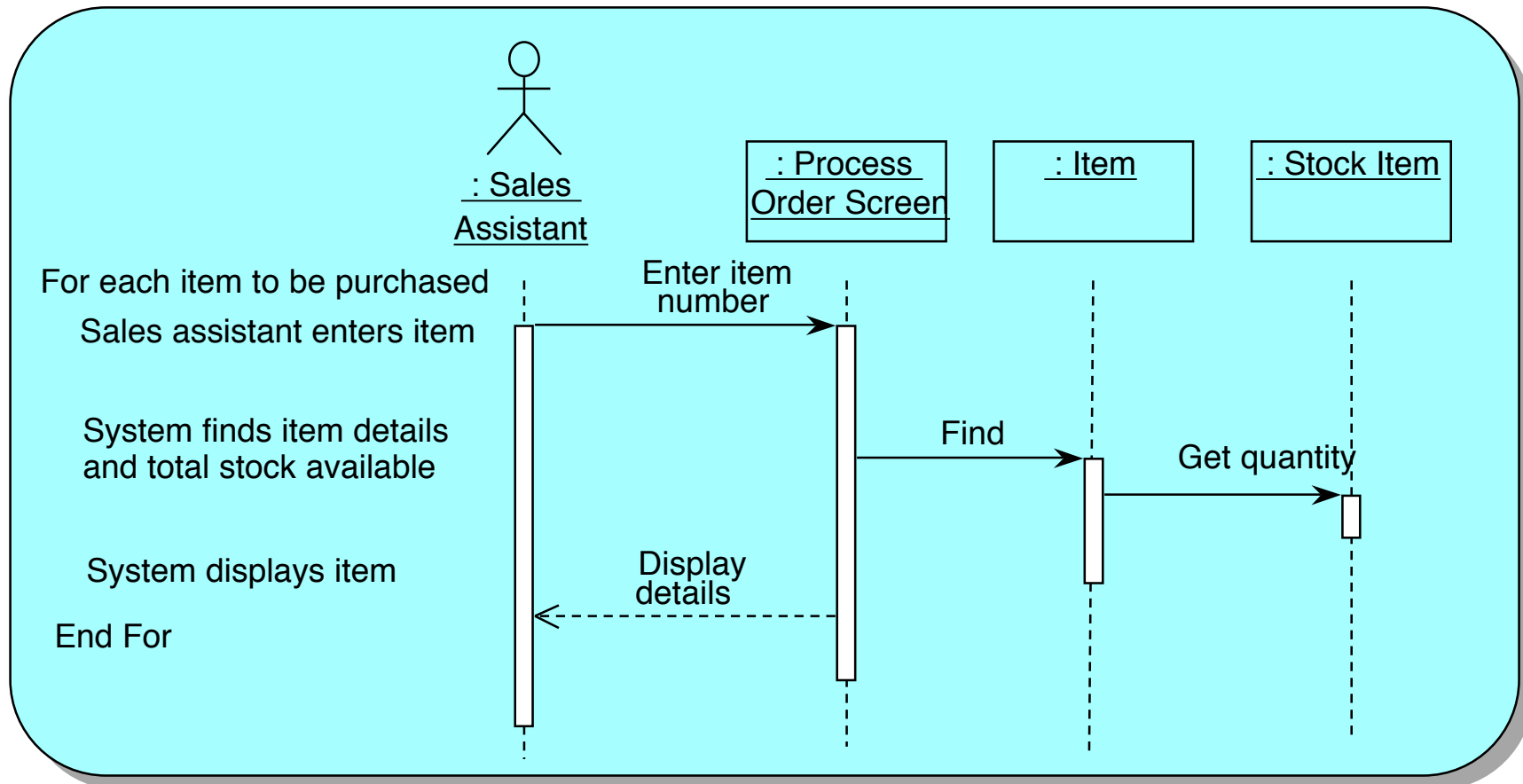
Use Case Diagram



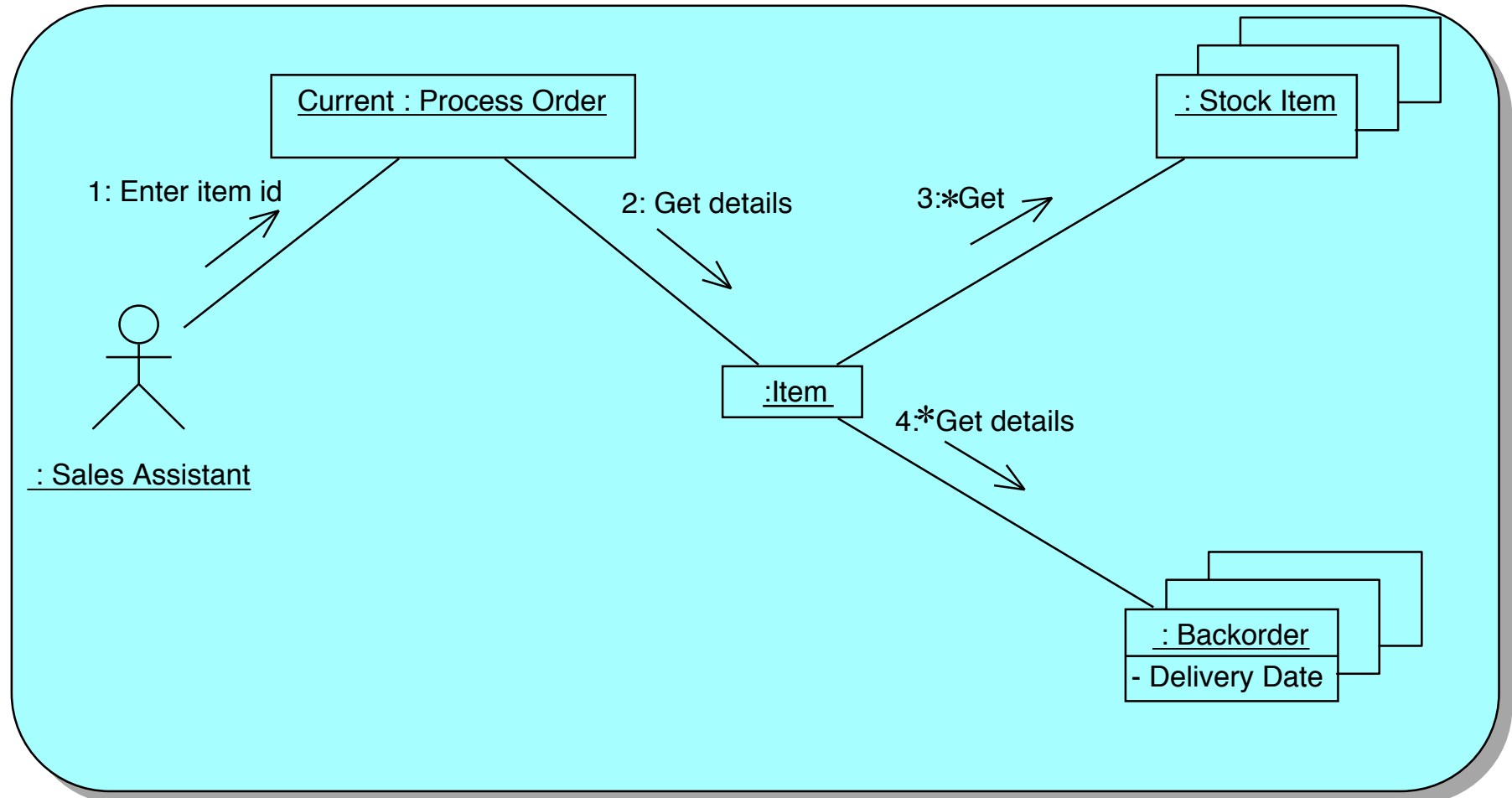
Class Diagram



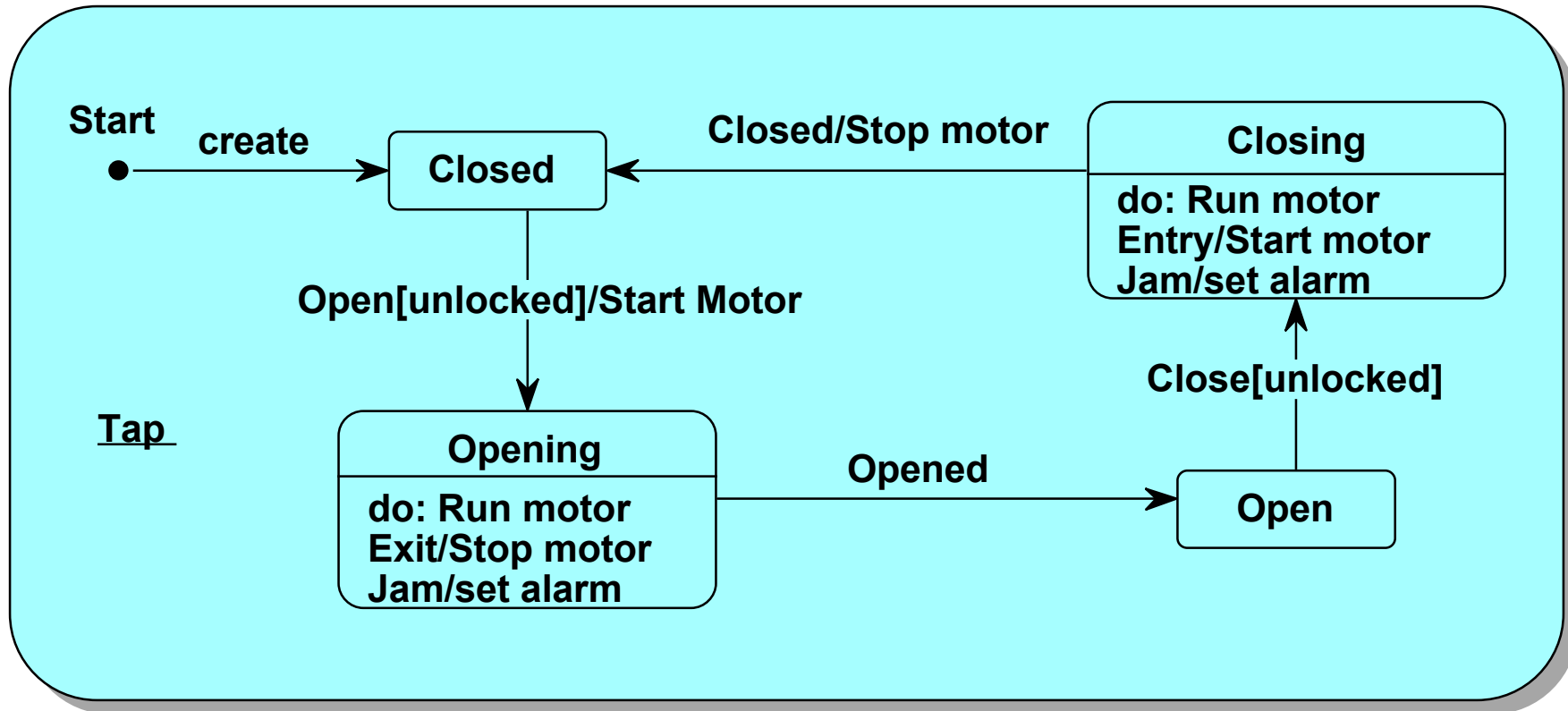
Sequence Diagram



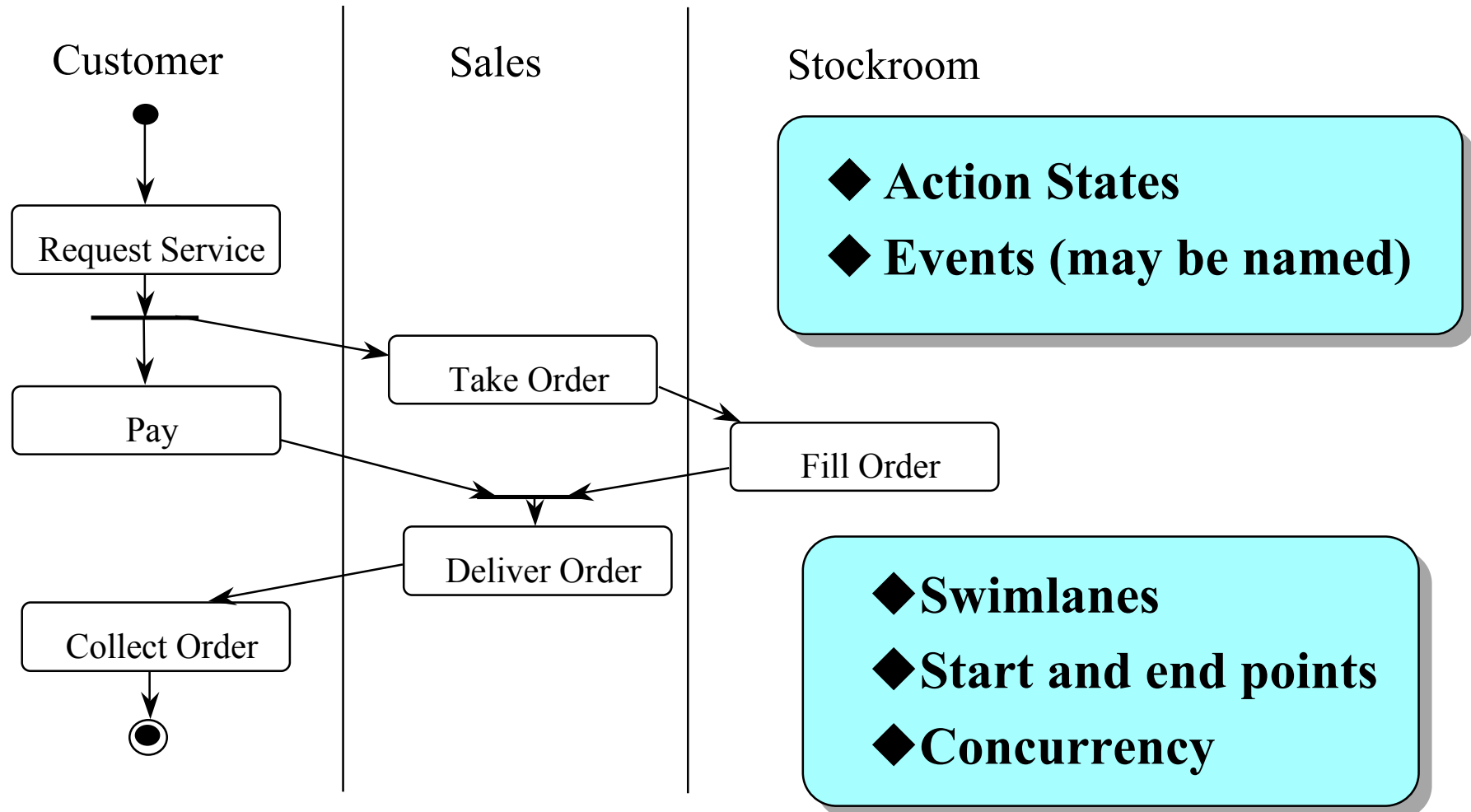
Collaboration Diagram



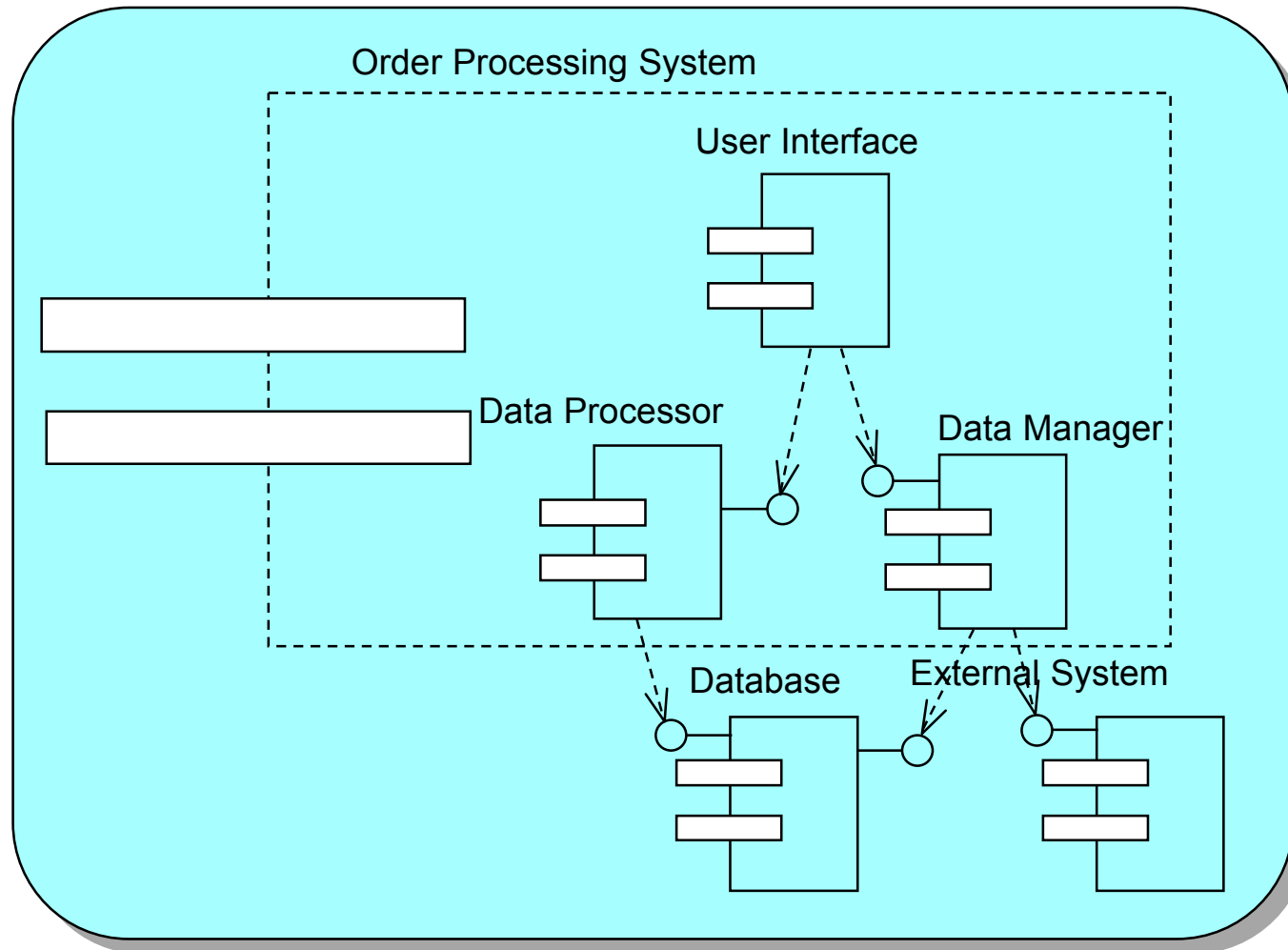
Statechart Diagram



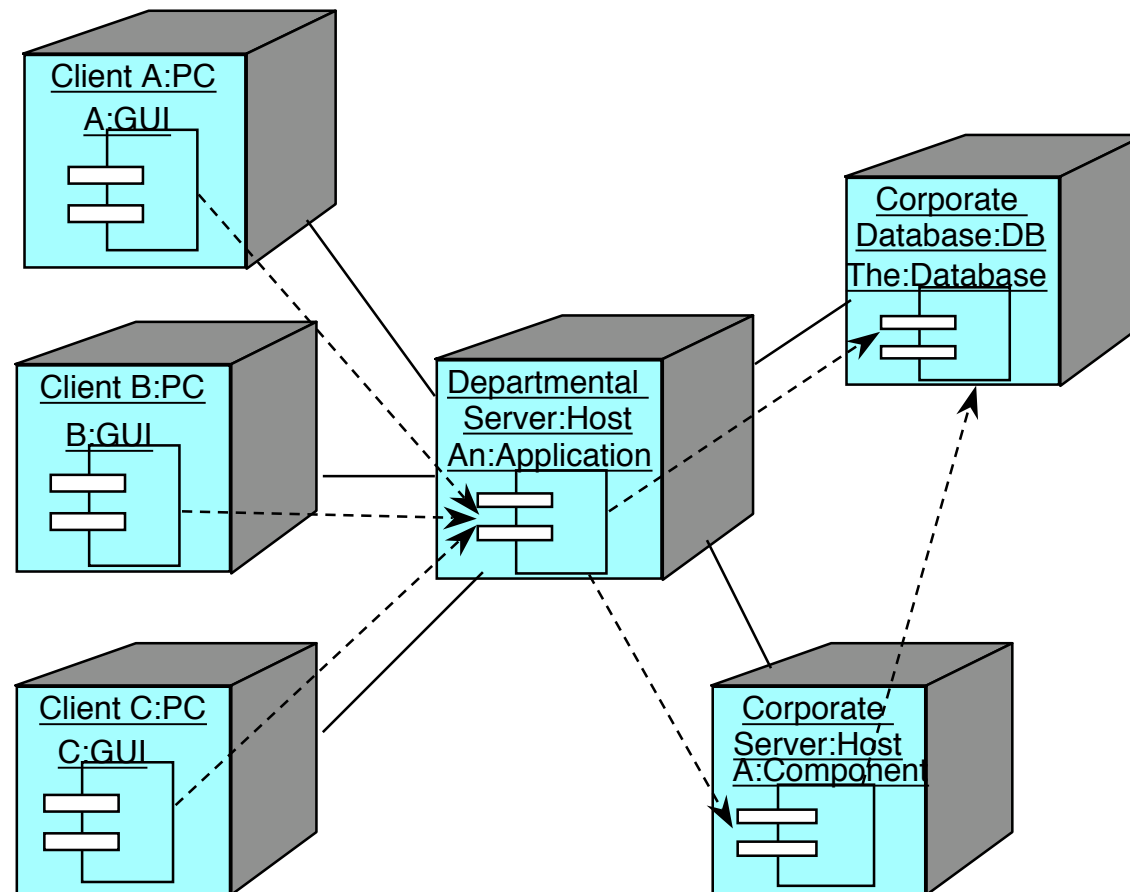
Activity Diagram



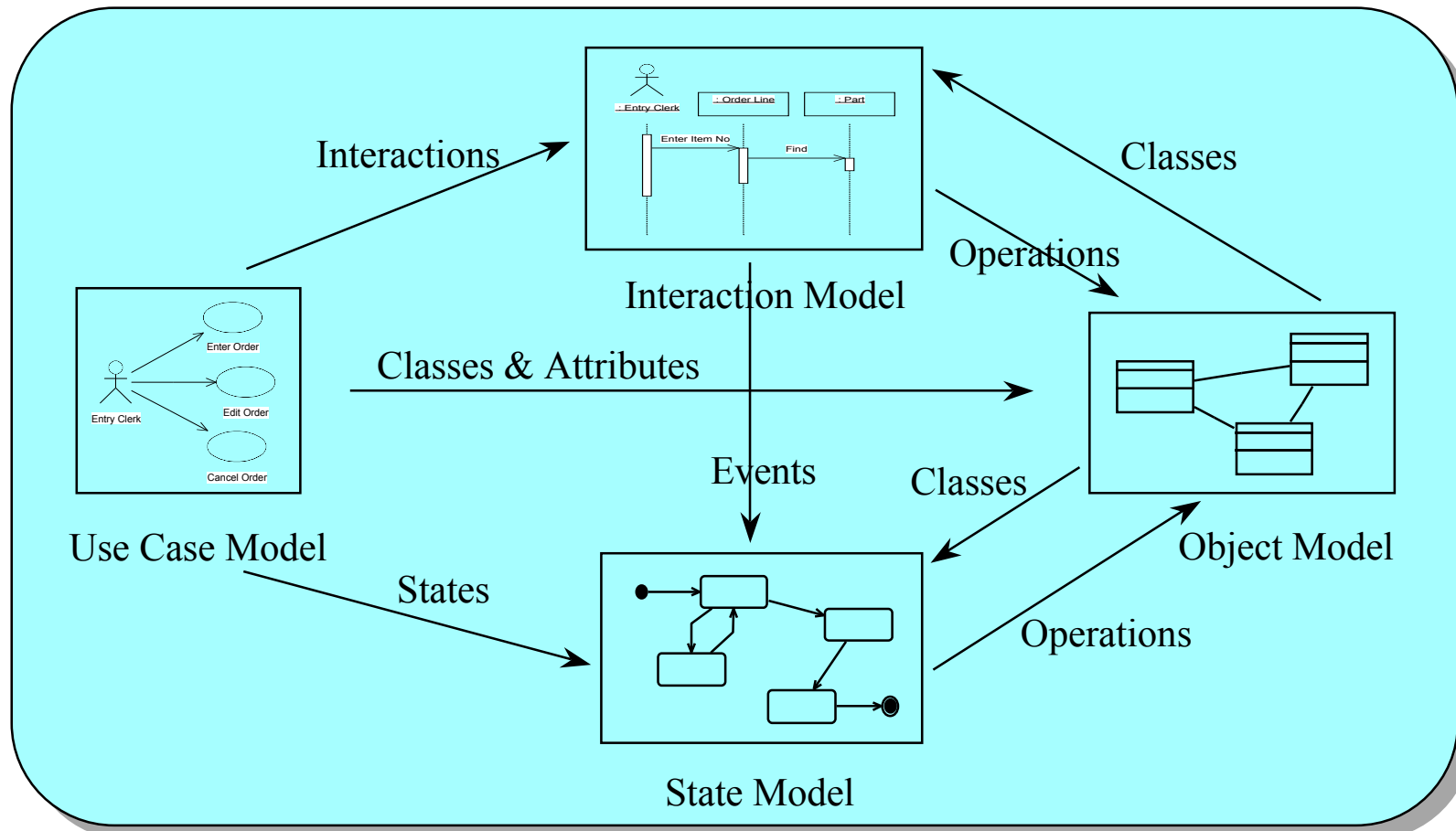
Component Diagram



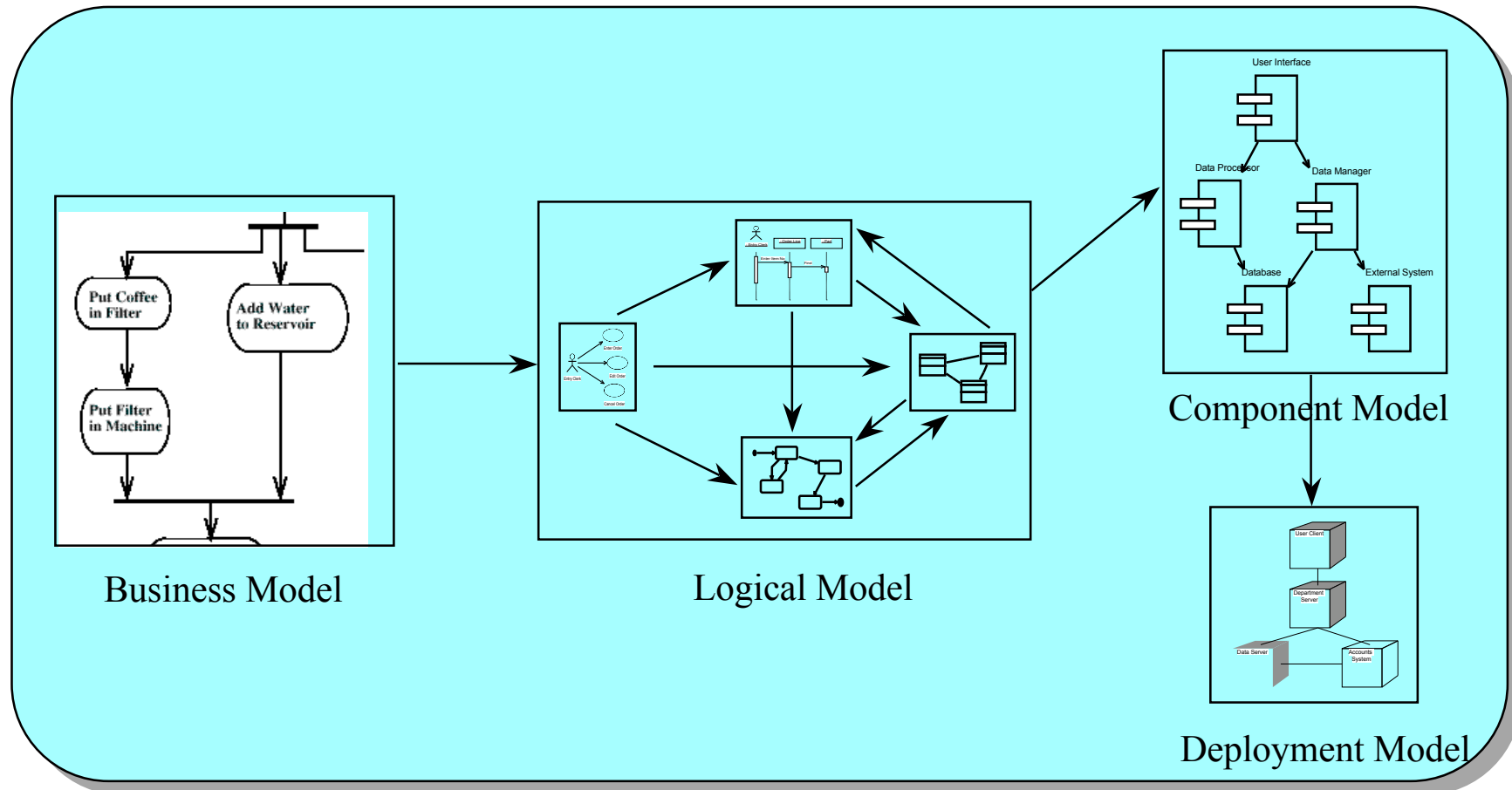
Deployment Diagram



Flow of Data Between Main Views



Flow of Data Between Subsidiary and Main Views



An Introduction to the Unified Modelling Language UML

Architecture Modelling

◆ Packages, interfaces and dependencies model

- Sub-systems
- Components
- Hierarchy
- Client-server relationships
- Architectural layering

